

Medical with Michigan Preschool: For the complete vision screening needs preschool through adult. Ideal for School, Athletic Physicals, Employment Physicals, and General Check-Ups.



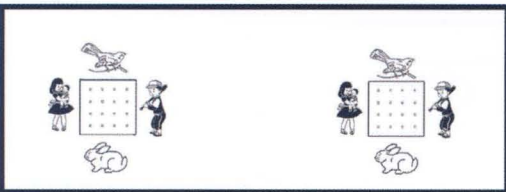
Slide #1 (2000-014) Far Point
Acuity Binocular Tumbling "E" (20/70)



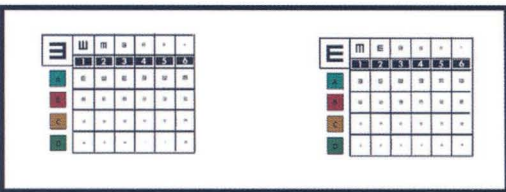
Slide #2 (2000-015) Far Point
Acuity Right Eye & Left Eye Monocular
Tumbling "E" (20/30)



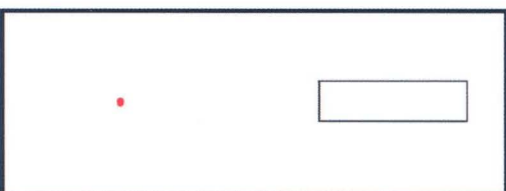
Slide #3 (2000-016) Far Point
Acuity Right Eye & Left Eye Monocular
Tumbling "E" (20/30)



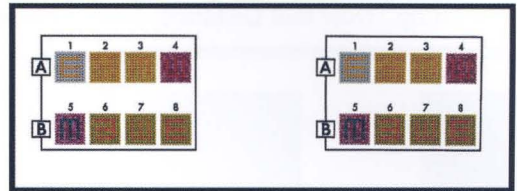
Slide #4 (2000-017) Far Point
Acuity Right Eye & Left Eye Monocular
Tumbling "E" (20/30)



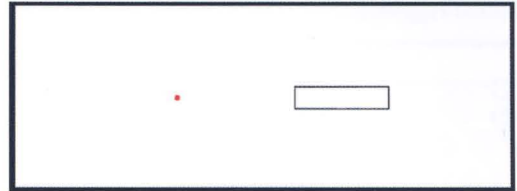
Slide #5 (2000-004) Far Point
Acuity Right Eye & Left Eye Monocular,
Right Eye & Left Eye Plus Lens Test (20/200-20/20)



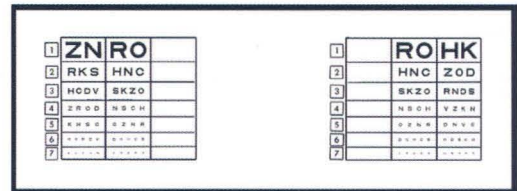
Slide #6 (2000-020) Far Point
Muscle Balance
(Combination Lateral & Vertical Phoria)



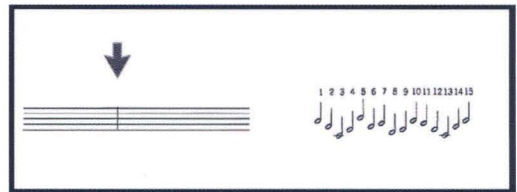
Slide #7 (2000-019) Far Point
Color Perception (Tumbling "E")



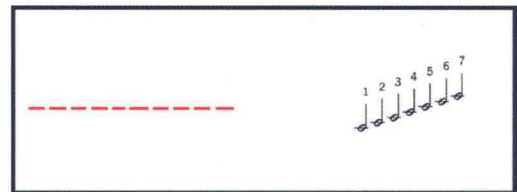
Slide #8 (2000-022) Near Point
Muscle Balance
(Combination Lateral & Vertical Phoria)



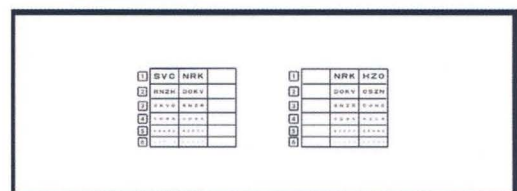
Slide #9 (2000-003) Far Point
Acuity Right Eye & Left Eye Monocular
or Both Eyes Simultaneously (20/200-20/20)



Slide #10 (2000-012) Far Point
Lateral Phoria (1 Diopter Increments)



Slide #11 (2000-025) Far Point
Vertical Phoria (1/2 Diopter Increments)



Slide #12 (2000-007) Near Point
Acuity Right Eye & Left Eye Monocular
or Both Eyes Simultaneously (20/100-20/20)