



# Easy Screen<sup>®</sup>

CLEANING WIPE

**Finally, a compatible touchscreen cleaner that works at the speed of technology.\***

- Features the power of 70% isopropyl alcohol (IPA)
- Compatible with touchscreen healthcare equipment
- Rapidly cleans dirt, grime, fingerprints, and smudges



\*Cleaning the screen of your mobile device with a wipe containing alcohol may reduce the lifespan of any anti-fingerprint coating. Please check your device manufacturer's cleaning instructions.

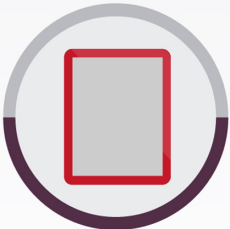
**+ PDI<sup>®</sup>**  
BE THE DIFFERENCE

# TOUCHSCREEN COMPATIBILITY

Cleans common touchscreen healthcare equipment... and more.



Touchscreens

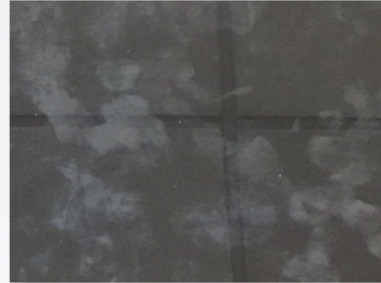


Tablets, electronic medical record equipment

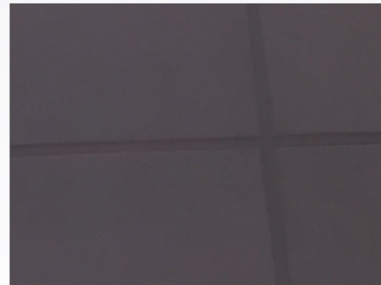


OR and procedural lights, lights within a housing unit

- Fast-drying
- No residue
- Anti-fogging
- Anti-streaking



Before cleaning



After cleaning with Easy Screen

### Compatible with:

Polycarbonate	Acrylic
Corning® Gorilla® Glass, including 3 and 4	Glass
Sapphire glass	Etched glass
Aluminum silicate	Stainless steel
	<b>And more</b>

	REORDER NO.	WIPE SIZE	CASE PACK	CASE WGT	CASE CUBE	PALLET TI/HI
<b>Easy Screen®</b>						
<b>Cleaning Wipe</b>	P03672	6" X 9"	70/12	10.64 lbs	0.989 ft	8/5

Energized electronic equipment use only. Not to be used for motorized vehicle maintenance, or their parts. Consult equipment manufacturer's instructions prior to use.

Corning® and Gorilla® are registered trademarks of Corning Incorporated.

