



## Nicolet® VersaLab® LE & SE

Versatile and accurate  
peripheral vascular evaluation

### The Perfect Portable Solution

The Nicolet VersaLab LE & SE are portable, battery or line-operated Doppler systems for evaluation of the peripheral vasculature. Crisp, clear Doppler sound is now complemented with a display and printout to make documentation for reimbursement fast and convenient.

### Compact, Economical and Versatile

The VersaLab LE & SE lets you perform basic vascular testing. This bi-directional Doppler has a built-in printer for fast and easy documentation. And best of all, the compact VersaLab LE & SE is loaded with diagnostic features at a value-added price.

### Bi-Directional

The VersaLab LE & SE is available with bi-directional 4 or 8 MHz frequency, continuous wave Doppler transducers. You can select the optimum frequency for the peripheral application of your choice.

### Documentation for Reimbursement

Now you can hear and see the results from your Doppler testing procedures. The VersaLab LE & SE's built-in printer provides fast, complete and accurate documentation. A unique image scrolling feature allows you to review up to 50 seconds of data and choose the ideal waveforms to document the patient's condition. Other portable systems don't always offer the flexibility to preview the printout helping to eliminate wasted time and paper.

Pertinent information appears on the printout: date, time, probe frequency and settings, velocity and various calculations. Documentation is complete with room for examiner's comments. This comprehensive documentation aids in reimbursement, allows for placement in the patient's chart and makes repeat studies for follow-up or research purposes easier.

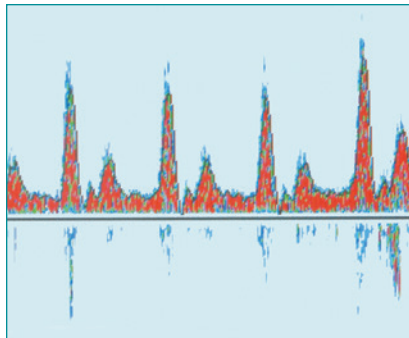


## Portable and Convenient

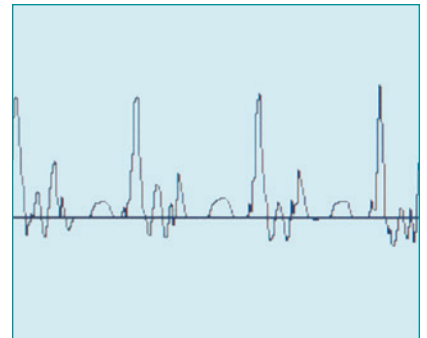
The VersaLab LE & SE systems weigh a mere 1.9 kg (4.1 pounds) and are battery or line operated for the ultimate in portability and convenience. A tilt-stand allows for wall mounting or desktop use with adjustment for the perfect viewing angle. The optional roll stand offers even greater portability and security within the office or hospital.

## Accurate Visualization and Quantification

The VersaLab portable Doppler systems are available in two models. The simple waveform traces on the VersaLab LE clearly indicate the peak or mean blood flow profile. The VersaLab SE, with spectral analysis, displays comprehensive information about all components of the blood flow profile. It allows you to quickly delineate venous from arterial flow, and accurately indicate conditions such as turbulence. Both systems offer accurate visualization and quantification of blood flow parameters including velocity, directionality and a host of calculated measurements.



**Versalab SE with spectral analysis**



**Versalab LE with simple waveform trace**

## Benefits of Color Spectral Display

- Review all frequency components of blood flow profile.
- Visualize turbulence and other flow disturbances.
- Determine and document the quality of flow.
- Quickly distinguish arterial from venous signals.

## Exceptional ownership experience

Nicolet Brand Products captures the knowledge and expertise of more than five decades of ingenuity and innovation. A leading manufacturer of handheld and desktop Dopplers for obstetric and vascular applications, we strive to build upon our hard-earned reputation and continue to meet the rigorous standards for quality and reliability that our customers have come to expect. Nicolet VersaLab systems follow in the Natus tradition of excellent customer service. The VersaLab LE & SE are manufactured in our ISO 13485 certified facility.



# Fast Facts on ABIs

## The ABI Exam

- The Ankle/Brachial Index (ABI) is a systolic blood pressure comparison between the arms and ankles.
- This procedure is similar to taking a standard blood pressure, but a Nicolet Doppler is used to listen to the blood flow instead of a stethoscope.
- You only need to determine the systolic pressures for this simple procedure.

## Why Do an ABI Exam?

- It is a fast, effective tool for screening for Peripheral Arterial Disease (PAD).
- It is non-invasive, easy, and affordable.
- Often, an ABI exam is recommended for patients with the following risk factors:
  - 65+ years old
  - diabetic
  - high blood pressure
  - overweight
  - inactive or bedridden
  - high cholesterol
  - family history of heart attack or stroke.

## Peripheral Arterial Disease

(PAD) A walking time bomb:<sup>2</sup>

- 8-12 million people in the USA alone are living with PAD.<sup>3</sup>
- PAD sufferers have a five-fold risk of death from heart attack or stroke.<sup>3</sup>
- Diabetic patients are at an even higher risk.<sup>3</sup>

This is why the American Diabetes Association (ADA) December 2003 Consensus Statement recommends that anyone over the age of 50 with Diabetes be screened for PAD. Screening is also recommended for diabetic patients under 50 with other risk factors such as smoking, high blood pressure, high cholesterol or having diabetes for 10 years or more.<sup>1</sup>

## ABI Results

Determine the severity of disease:

ABI Value*	Indication
0.96 or Above	Generally Normal
0.81 - 0.95	Mild Disease
0.51 - 0.81	Moderate Disease
0.31 - 0.50	Moderate to Severe Disease
0.30 or below	Severe Disease

\*Always use the highest ABI value obtained.<sup>1</sup>

1 Reference:  
Daigle, R. J. BA, RVT.  
*Techniques in Noninvasive Vascular Diagnosis.*  
Summer Publishing, 2002

2 Reference:  
Alan Hirsch, MD  
*Peripheral Arterial Disease: Are You a Walking Time Bomb*  
February 2003

## Ankle/Brachial Index (ABI) Exams Codes that may be applicable for use with VersaLab LE & SE\*

### CPT Code 93922:

Non-invasive physiologic studies of upper or lower extremity arteries, single level, bilateral (for example, ankle/brachial indices, Doppler waveform analysis, volume plethysmography, transcutaneous oxygen tension measurement).

### ICD-10 Codes for Extremity Arterial Studies:\*\*

170.0	Atherosclerosis of aorta
170.219	Atherosclerosis of the extremities with intermittent claudication
170.229	Atherosclerosis of the extremities with rest pain
170.25	Atherosclerosis of the extremities with ulceration
170.269	Atherosclerosis of the extremities with gangrene
170.399, 170.499, 170.599	Atherosclerosis of bypass graft of extremities
173.00-173.89	Other peripheral vascular diseases
443.9	Peripheral vascular disease, unspecified

\* Please note: ICAVL recommends that you contact the insurance carriers in your area for the most accurate and current reimbursement information.

\*\* Please reference <https://www.aapc.com/icd-10/codes/for> specific ICD code information

3 Consensus Statement: American Diabetes Association  
*Peripheral Arterial Disease in People with Diabetes*  
DIABETES CARE, Volume 26, Number 12, December 2003

## Ankle/Brachial Index (ABI) Cuff Kits

Natus Neurology offers cuff kits for performing vascular competency testing. These kits contain a sphygmomanometer, the appropriate size cuffs and support materials to allow you to perform Ankle/Brachial Index test.

ABIV - ABI kit for VersaLab LE/SE:

Sphygmomanometer

10 cm cuffs (4)

Thermal Paper (5 rolls)



## System Configurations

### VersaLab LE with:

4 MHz probe.....	VLL40
8 MHz probe.....	VLL80
4 & 8 MHz probe.....	VLL48
8 MHz probe & ABIV Cuff Kit.....	VLL80A
8 MHz probe, ABIV Cuff Kit, V200 Mounting Bracket & ST3 Roll Stand.....	VLL80AS
8 MHz probe, V200 Mounting Bracket & ST3 Roll Stand.....	VLL80S

### VersaLab SE with:

4 MHz probe.....	VLS40
8 MHz probe.....	VLS80
4 & 8 MHz probe.....	VLS48

### VersaLab LE Int'l with:

4 MHz probe.....	VLL40I
8 MHz probe.....	VLL80I
4 & 8 MHz probes.....	VLL48I

### VersaLab SE Int'l with:

4 MHz probe.....	VLS40I
8 MHz probe.....	VLS80I
4 & 8 MHz probes.....	VLS48I



## Supplies

Natus Neurology offers a full range of Nicolet brand obstetric and vascular Dopplers, accessories and supplies. Our dedicated customer service team based in Golden, Colorado has been providing exceptional support for over 40 years.

For more information, please contact your Nicolet Distributor or call:

**Toll Free: 877-842-7970**

**International: 303-431-9400**

**Fax: 303-431-0429**



### Natus Neurology Incorporated

3150 Pleasant View Road  
Middleton, WI 53562 USA  
Tel: 1-800-356-0007  
1-608-829-8500  
Fax: 1-608-829-8709  
[www.natus.com](http://www.natus.com)

### Natus – Nicolet brand products

720 Corporate Circle, Suite A  
Golden, CO 80401 USA  
Tel: 1-877-842-7970  
1-303-431-9400  
Fax: 1-303-431-0429  
1-800-939-4639

## Accessories

### Product

### Catalog #

Ultrasound Gel (Case of 12 – 0.25 Liter Bottles).....	A120
Disinfecting Wipes, Protex (60 wipes/pack).....	019-473000
Stereo Personal Headset.....	A220
VersaLab Printer Paper (Case of 5 rolls).....	A355
VersaLab Soft-sided Carrying Case.....	A430
VersaLab Rechargeable Battery.....	C633
VersaLab Power Supply, 110V – 220V.....	C644
VersaLab Power Cord (110 V).....	C645
VersaLab Power Cord (220 V).....	C645I
VersaLab LE/SE Service Manual.....	M70823
Roll Stand with basket (for use with VersaLab - also requires the V200).....	ST3
VersaLab Tilt-Stand.....	ST30
IV Pole/Roll Stand Mount Kit.....	V200
4 MHz Vascular Probe.....	BD40
8 MHz Vascular Probe.....	BD80
PAD Patient Education Pamphlets, 100/pkg.....	AB11
ABI Report Forms.....	AB12
Laminated ABI Chart.....	AB13
Ankle/Brachial/Toe Cuff Kit.....	ABITO
ABI Cuff Kit for VersaLab LE/SE.....	ABIV
Toe/Brachial Cuff Kit.....	TOEK
Sphygmomanometer (aneroid).....	XR0013
6.5 cm. Cuff.....	XR0020
17 cm. Cuff (limited supply available).....	XR0031
10 cm. Cuff.....	XR0075
12 cm. Cuff.....	XR0076
12 cm. Cuff, Long.....	XR0077
2.5 cm. Toe Cuff with coiled tubing & aneroid adapter (for use with XR0013).....	XR0089
1.9 cm replacement cuff (no coiled tubing/adapter).....	M20167
2.5 cm replacement cuff (no coiled tubing/adapter).....	M20101

## Technical Specifications

Weight, main unit only.....	1.9 kg (4.1 lbs.)
Dimensions.....	31 cm x 23 cm x 7.3 cm (12.2 x 9.1 x 1.9 in.)
Doppler Technology.....	Continuous Wave (CW) unfocused Both 4 MHz and 8 MHz probes available
Battery type.....	7.2V NiMH, 6x4/5A, rechargeable
Full Charge Life.....	3 hours
Operating Ambient Temperature.....	10° C - 40° C (50° F - 104° F)
Graphic Display.....	320 x 240 pixel; Color or B&W, LCD available
Printer.....	Thermal, 104 mm print width, 832 dots, 8 dots/mm
Printer Paper.....	Roll, 82 ft, 112 mm wide, thermal (7 year print-out archivability)
Print Speed.....	12.5 mm/s
Timescales.....	7.5, 15, 25 mm/s
Speakers.....	(2) 66 mm, 8W, 0.5 watt
Audio Output.....	0.5 watt per channel
Headset.....	3.5 mm jack, 32 ohm
Spectral Response.....	200 Hz - 10 KHz
FFT (Fast Fourier Transform).....	256 point, 10 msec, Hamming window
Recharger, INPUT.....	100 - 250 VAC, 50/60 Hz, Model WSL170M
Recharger, OUTPUT.....	7vDC @ 3.5 A, Model WSL170M
Safety Standards.....	IEC 601-1
Classification.....	Internally/Externally powered equipment
Classification of Protection Against Electrical Shock.....	Type B