

Better illumination.

Superior

colour rendering.

Greater magnification.

HEINE otoscopes

Overview

It goes without saying that all of our otoscopes are premium products. But, still, they differ in one or two details. Read on for a summary of what these different details are and all their benefits:



	BETA 400 F.O. High-end otoscope	BETA 200 F.O. Standard otoscope	K180 F.O. Basic otoscope	mini 3000 F.O. Pocket otoscope	mini 3000 Pocket otoscope
	Very detailed	Quick overview		Compact & mobile	Compact & mobile
Level of detail	very high	high	adequate	good	adequate
Viewing window	glass		acrylic		
Magnification	4,2x	3x			
Illumination	F.O. XHL or LED ^{HQ}		F.O. XHL	F.O. XHL or LED ^{HQ}	direct XHL
Housing construction	metal		polycarbonate		
Handle options power sources	battery handle (XHL only), USB rechargeable handle, rechargeable handle with table charger, EN 200 EN 200-1			battery handle, rechargeable handle with table charger	
Tips specula	reusable tips, AllSpec disposable tips				
Pneumatic testing of tympanum mobility	insufflation port available			insufflation port available, connector required	–
Catalogue page	7	9	11	13	18

HEINE BETA® 400 LED F.O. otoscope

Our high-end instrument with 4.2x magnification



Exceptional durability combined with our highest 4.2x magnification. LED^{HQ} provides particularly bright illumination. BETA otoscopes are the result of ongoing optimisation and further development down to the smallest detail – where we leave nothing to chance.

EXTREMELY DETAILED VIEW

- ▶ Easy identification of anatomical structures and foreign bodies due to 4.2x magnification
- ▶ Very good spatial representation due to high depth of field
- ▶ High-resolution images due to precision optics
- ▶ Natural colour rendering
- ▶ Even and reflex-free illumination due to fiber optic technology
- ▶ Particularly bright due to LED^{HQ}

EXTREME DURABILITY

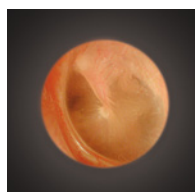
- ▶ Solid metal housing
- ▶ Scratch-proof glass lenses
- ▶ Consistently good view over many years
- ▶ No need to ever exchange the LED thanks to LED^{HQ}

INTUITIVE OPERABILITY

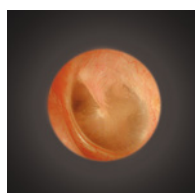
- ▶ Practical one-finger operation
- ▶ Always the ideal light intensity due to patented and continuous brightness control
- ▶ Easy instrumentation due to a fixed optical system to be flipped open
- ▶ Safe, hygienic reprocessing
- ▶ Pneumatic eardrum testing by means of an integrated insufflation port

FLEXIBLE POWER SOURCE OPTIONS

- ▶ Rechargeable battery: with USB or table charger
- ▶ Full functionality of the BETA 400 LED is guaranteed with the current BETA rechargeable handles and the EN 200 | EN 200-1 wall transformers
- ▶ Practical and expandable with other HEINE instrument heads
- ▶ **A tip for a better future.** HEINE AllSpec disposable tips – made of recycled plastic. Read more on [page 15](#)
- ▶ **Also available with XHL xenon halogen illumination**
Bright illumination and authentic colour rendering; for other technical specifications see BETA 400 LED F.O. otoscope



BETA 400 LED F.O.
with 4,2x magnification



Conventional otoscope

HEINE BETA® 400 LED F.O. otoscope

Diagnostic sets | kits

Set includes: BETA 400 F.O. otoscope,

1 set (4 pcs.) of reusable tips, 10 AllSpec disposable tips 4 mm Ø, spare bulb for XHL version, hard case



[01]

	2.5V XHL	LED
BETA battery handle	B-143.10.118	–
BETA4 USB rechargeable handle with USB cord and plug-in power supply	–	B-143.28.388
BETA4 NT rechargeable handle with NT4 table charger [01]	–	B-143.24.420



[02]

Kit includes: BETA 400 F.O. otoscope,

10 AllSpec disposable tips 4 mm Ø

	2.5V XHL	LED
BETA battery handle	B-010.10.118	–
BETA4 USB rechargeable handle with USB cord and plug-in power supply [02]	–	B-010.28.388
BETA4 NT rechargeable handle with NT4 table charger	–	B-010.24.420

- You can find information on our combined diagnostic sets and kits on [pages 74 to 78.](#)
- For information on HEINE battery and rechargeable handles and the EN 200 wall transformer, see [pages 150-160.](#)

HEINE BETA® 200 LED F.O. otoscope

Standard instrument for a quick overview



Exceptional durability combined with optimum magnification. Particularly bright illumination due to LED^{HQ}. BETA otoscopes are the result of ongoing optimisation and further development down to the smallest detail – where we leave nothing to chance.

QUICK OVERVIEW

- ▶ Very good spatial representation due to maximum depth of field
- ▶ High-resolution and distortion-free images due to multi-coated glass viewing window
- ▶ 3x magnification
- ▶ Natural colour rendering
- ▶ Even and reflex-free illumination due to fiber optic technology
- ▶ Particularly bright due to LED^{HQ}

EXTREME DURABILITY

- ▶ Solid metal housing
- ▶ Scratch-proof glass lenses
- ▶ Consistently good view over many years
- ▶ No need to ever exchange the LED thanks to LED^{HQ}

INTUITIVE OPERABILITY

- ▶ Practical one-finger operation
- ▶ Always the ideal light intensity due to patented and continuous brightness control
- ▶ Easy instrumentation due to fixed, swivelling viewing window
- ▶ Safe, hygienic reprocessing
- ▶ Pneumatic eardrum testing by means of an integrated insufflation port

FLEXIBLE POWER SOURCE OPTIONS

- ▶ Rechargeable battery: with USB or table charger
- ▶ Full functionality of the BETA 200 LED is guaranteed with the current BETA rechargeable handles and the EN 200 | EN 200-1 wall transformers
- ▶ Practical and expandable with other HEINE instrument heads
- ▶ **A tip for a better future.** HEINE AllSpec disposable tips – made of recycled plastic. Read more on [page 15](#)
- ▶ **Also available with XHL xenon halogen illumination**
Bright illumination and authentic colour rendering; for other technical specifications see BETA 200 LED F.O. otoscope

HEINE BETA® 200 LED F.O. otoscope

Diagnostic sets | kits

Set includes: BETA 200 F.O. otoscope,

1 set (4 pcs.) of reusable tips, 10 AllSpec disposable tips 4 mm Ø,
spare bulb for XHL version, hard case



[01]

	2,5V XHL	3,5V XHL	LED
BETA battery handle	B-141.10.118	–	–
BETA4 USB rechargeable handle with USB cord and plug-in power supply	–	B-141.27.388	B-141.28.388
BETA4 NT rechargeable handle with NT4 table charger [01]	–	B-141.23.420	B-141.24.420



[02]

Kit includes: BETA 200 F.O. otoscope,

10 AllSpec disposable tips 4 mm Ø

	2,5V XHL	LED
BETA battery handle	B-011.10.118	–
BETA4 USB rechargeable handle with USB cord and plug-in power supply [02]	–	B-011.28.388
BETA4 NT rechargeable handle with NT4 table charger	–	B-011.24.420

- You can find information on our combined diagnostic sets and kits on [pages 74 to 78.](#)
- For information on HEINE battery and rechargeable handles and the EN 200 wall transformer, see [pages 150-160.](#)

HEINE K180 F.O. otoscope

Standard instrument for a smaller budget



Otoscope with xenon halogen illumination and fiber optic technology.
Housing made of lightweight, shockproof polycarbonate.

DETAILED VIEW

- ▶ High-resolution and distortion-free images due to acrylic viewing window
- ▶ 3x magnification
- ▶ True-to-life colour rendering
- ▶ Even and reflex-free illumination due to fiber optic technology
- ▶ Xenon halogen illumination (XHL)

ENHANCED DURABILITY

- ▶ Sturdy polycarbonate housing
- ▶ Lightweight yet durable

INTUITIVE OPERABILITY

- ▶ Practical one-finger operation
- ▶ Always the ideal light intensity thanks to continuous brightness control
- ▶ Easy instrumentation due to fixed, swivelling viewing window
- ▶ Safe, hygienic reprocessing
- ▶ Pneumatic eardrum testing by means of an integrated insufflation port

FLEXIBLE POWER SOURCE OPTIONS

- ▶ Rechargeable battery: with USB or table charger
 - ▶ EN 200 | EN 200-1 wall transformer
 - ▶ Replaceable batteries
- ▶ **A tip for a better future.** HEINE AllSpec disposable tips – made of recycled plastic. Read more on [page 15](#)

HEINE K180 F.O. otoscope

Diagnostic sets | kits



[01]



[02]

Set includes: K180 F.O. otoscope,
1 set (4 pcs.) of reusable tips, soft pouch

	2,5V XHL	3,5V XHL
BETA battery handle	B-181.10.118	–
BETA4 USB rechargeable handle with USB cord and plug-in power supply [01]	–	B-181.27.388

Kit includes: K180 F.O. otoscope with

	2,5V XHL
BETA battery handle [02]	B-012.10.118

- You can find information on our combined diagnostic sets and kits on [pages 74 to 78.](#)
- For information on HEINE battery and rechargeable handles and the EN 200 wall transformer, see [pages 150-160.](#)

HEINE mini 3000® LED F.O. otoscope

HEINE quality in pocket format



Compact otoscope with especially bright illumination and authentic colour rendering due to LED^{HQ} (no need to ever exchange the LED). Exclusive design. Sturdy housing. Always close to hand. Available in black or blue. It is impossible to get much more in such a small housing.

INTUITIVE OPERABILITY

- ▶ Always close to hand with practical attachment clip
- ▶ Switches off automatically as soon as it is clipped to the pocket
- ▶ Easy instrumentation. Viewing window fixed and can be swivelled to the side
- ▶ Pneumatic eardrum testing by means of an integrated insufflation port
- ▶ Sturdy and non-slip due to a high-quality handle housing

DETAILED VIEW

- ▶ High-resolution images, minimal reflection
- ▶ 3x magnification
- ▶ Natural colour rendering
- ▶ Even and reflex-free illumination due to fiber optic technology
- ▶ Particularly bright due to LED^{HQ}



FLEXIBLE POWER SOURCE OPTIONS

- ▶ Rechargeable battery: with mini NT table charger
- ▶ Replaceable batteries
- ▶ Operating time of typically 10 hours: Fewer battery changes, rechargeable batteries last longer
- ▶ Practical and expandable with other mini 3000 instrument heads
- ▶ **Also available with XHL xenon halogen illumination**
Bright illumination and authentic colour rendering; for other technical specifications see mini 3000 LED otoscope
- ▶ **A tip for a better future.** HEINE AllSpec disposable tips – made of recycled plastic. Read more on [page 15](#)

HEINE mini 3000® F.O. otoscope

Diagnostic sets | kits

Set | kit includes: mini 3000 F.O. otoscope,

1 set (4 pcs.) of reusable tips, 10 AllSpec disposable tips 4 mm Ø.

Optionally with or without hard case



[01]

	2,5V XHL	2,5V LED
mini 3000 battery handle (with batteries), hard case [01]	D-851.10.021	D-885.20.021
mini 3000 battery handle (with batteries), without case	D-001.70.120	D-008.70.120



[02]

Kit includes: mini 3000 F.O. otoscope,

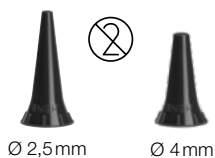
10 AllSpec disposable tips 4 mm Ø

	2,5V XHL	2,5V LED
mini 3000 battery handle with batteries [02]	D-001.70.110	D-008.70.110
mini 3000 rechargeable handle (please order mini NT table charger separately)	D-001.70.301	D-008.70.301



- Available in black or blue. Please specify the colour you prefer when ordering. If not otherwise specified, we will supply black instruments.
- You can find information on our combined diagnostic sets and kits on [pages 74 to 78](#).
- To upgrade to a rechargeable instrument with mini NT table charger, please see [page 161](#).

HEINE AllSpec disposable tips made of recycled plastic



- The **renowned HEINE Quality** is now saving tons of CO₂
- **For a particularly secure fit, best light transmission and hygiene**
- **Assured quality.** No sharp edges
- Read about what else we're doing for the environment here: www.heine.com/csr



[01]



[02]



[03]



[04]

AllSpec disposable tips for BETA 400, BETA 200, K180, mini 3000 F.O. and mini 3000 otoscopes

pack of 1,000 pcs. Ø 2.5 mm (infants) [01]	B-000.11.128
pack of 1,000 pcs. Ø 4 mm (adults)	B-000.11.127
case of 10 packs of 1,000 pcs, Ø 2,5 mm (infants)	B-000.11.138
case of 10 packs of 1,000 pcs, Ø 4 mm (adults)	B-000.11.137
dispenser pack, single, of 250 tips, Ø 2.5 mm (infants) [02]	B-000.11.153
dispenser pack, single, of 250 tips, Ø 4 mm (adults)	B-000.11.152
case of 10 dispenser packs of 250 tips, Ø 2.5 mm (infants)	B-000.11.151
case of 10 dispenser packs of 250 tips, Ø 4 mm (adults)	B-000.11.150

AllSpec tip dispenser incl. tips Ø 2.5 mm and 4 mm.

The right size, visible and instantly available. A clean new tip for each and every patient.

AllSpec tip dispenser (2 x 50 tips) [03]	B-000.11.149
--	--------------

Tip adaptor for BETA 100* and K100*

adaptor for AllSpec disposable tips for use with diagnostic otoscope (BETA 100, K100) [04]	B-000.11.306
--	--------------

*Instrument no longer available.

⊗: Single use only.

Reusable tips for the most secure fit

- **For the most secure fit, best light transmission and hygiene,** we recommend the use of HEINE otoscope tips
- **Made of high-density SANALON S plastic with smooth external finish.**
Easy to clean. Common germicides can be used. Autoclavable at up to 134 °C
- **Ergonomic shape.** Painless atraumatic insertion



Ø 2,4 mm Ø 3 mm

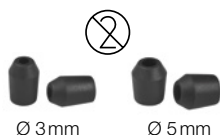


Ø 4 mm Ø 5 mm

Reusable tips for BETA 400, BETA 200, K180, mini 3000 F.O. and mini 3000 otoscopes

1 set = 4 pcs. reusable tips (2.4 – 5 mm Ø)		B-000.11.111
	1 piece	50 pieces
reusable tip Ø 2.4 mm	B-000.11.107	B-000.11.207
reusable tip Ø 3.0 mm	B-000.11.108	B-000.11.208
reusable tip Ø 4.0 mm	B-000.11.109	B-000.11.209
reusable tip Ø 5.0 mm	B-000.11.110	B-000.11.210

Further articles | accessories for otoscopes with fiber optic (F.O.) illumination



Soft disposable tips: Fits over the end of the tip to protect the auditory canal

soft disposable tip Ø 3 mm, 40 pcs. 1 pack	B-000.11.141
soft disposable tip Ø 5 mm, 40 pcs. 1 pack	B-000.11.142

⊗: Single use only.



BETA 400 F.O. otoscope head	2,5V XHL	3,5V XHL	LED
with 4 reusable tips, without handle	B-001.11.401	B-002.11.401	B-008.11.401
without handle and accessories	B-001.11.400	B-002.11.400	B-008.11.400



BETA 200 F.O. otoscope head	2,5V XHL	3,5V XHL	LED
with 4 reusable tips, without handle	B-001.11.501	B-002.11.501	B-008.11.501
without handle and accessories	B-001.11.500	B-002.11.500	B-008.11.500



K180 F.O. otoscope head	2,5V XHL	3,5V XHL
with 4 reusable tips, without handle	B-001.11.551	B-002.11.551
without handle and accessories	B-001.11.550	B-002.11.550



mini 3000 F.O. otoscope head	2,5V XHL	2,5V LED
without handle and accessories*	D-001.70.106	D-008.70.106

*Available in black or blue. Please specify the colour you prefer when ordering. If not otherwise specified, we will supply black instruments.



XHL xenon halogen spare bulb	2,5V XHL	3,5V XHL
for BETA 400, BETA 200 and K180	X-001.88.077	X-002.88.078
for mini 3000 F.O.	X-001.88.105	–



[01]



[02]

Insufflation bulb for pneumatic testing

insufflation bulb for BETA 400, BETA 200, K180, BETA 100*, K100* [01]	B-000.11.240
insufflation bulb for mini 3000 F.O. otoscope with connector	D-000.80.102
insufflation port connector for mini 3000 F.O. otoscope [02]	D-000.80.101

*Instrument no longer available.

HEINE mini 3000® otoscope

HEINE quality in pocket format, with direct illumination



Compact otoscope with improved xenon halogen (XHL) illumination. Exclusive design. Sturdy housing. Always close to hand. Available in black or blue. It is impossible to get much more in such a small housing. Except maybe in the mini 3000 LED otoscope.

INTUITIVE OPERABILITY

- ▶ Always close to hand with practical attachment clip
- ▶ Switches off automatically as soon as it is clipped to the pocket
- ▶ Easy instrumentation. Viewing window fixed and can be swivelled to the side
- ▶ Sturdy and non-slip due to a high-quality handle housing

DETAILED VIEW

- ▶ Eliminates reflections due to the head's black inner coating
- ▶ High-resolution images
- ▶ 3x magnification
- ▶ Natural colour rendering

FLEXIBLE POWER SOURCE OPTIONS

- ▶ Rechargeable battery: with mini NT table charger
- ▶ Replaceable batteries
- ▶ Practical and expandable with other mini 3000 instrument heads
- ▶ **A tip for a better future.** HEINE AllSpec disposable tips – made of recycled plastic. Read more on [page 15](#)



HEINE mini 3000® otoscope

Diagnostic sets | kits



[01]



[02]

Set|kit includes: mini 3000 otoscope,
1 set (4 pcs.) reusable tips, 10 AllSpec disposable tips 4 mm Ø

	2,5V XHL
mini 3000 battery handle (with batteries), hard case [01]	D-851.20.021
mini 3000 battery handle (with batteries), without case [02]	D-001.70.220
mini 3000 battery handle (with batteries), without case, without reusable tips	D-001.70.210



- Available in black or blue. Please specify the colour you prefer when ordering. If not otherwise specified, we will supply black instruments.
- You can find information on our combined diagnostic sets and kits on [pages 74 to 78](#).
- To upgrade to a rechargeable instrument with mini NT table charger, please see [page 161](#).

Further articles | accessories for HEINE otoscopes



mini 3000 otoscope head	2,5V XHL
without handle and accessories*	D-001.70.206

* Available in black or blue. Please specify the colour you prefer when ordering. If not otherwise specified, we will supply black instruments.



XHL xenon halogen spare bulb	2,5V XHL
for mini 3000	X-001.88.110

Reusable specula for BETA 100* and K100*



1 set = 5 ear specula, 1 nose speculum	B-000.11.221
3 ear specula Ø 3.5 4.5 5.5 mm	B-000.11.222
ear speculum Ø 2.2mm [01]	B-000.11.215
ear speculum Ø 2.8mm	B-000.11.216
ear speculum Ø 3.5mm	B-000.11.217
ear speculum Ø 4.5mm	B-000.11.218
ear speculum Ø 5.5mm	B-000.11.219
nose speculum Ø 10mm [02]	B-000.11.220



UniSpec disposable specula for BETA 100* and K100*

pack of 1,000, Ø 2.5 mm (infants) 1,000 pcs. 1 pack [03]	B-000.11.242
pack of 1,000, Ø 4 mm (adults) 1,000 pcs. 1 pack	B-000.11.241
UniSpec tip dispenser [04]	B-000.11.146

*Instrument no longer available.

⊗: Single use only.

[04]

Tongue-blade holder for wooden tongue-blades

- ▶ **XHL xenon halogen technology.** Concentrated illumination of oral cavity and pharynx
- ▶ **Light-guide for bulb.** Avoids dazzle



Kit includes: tongue-blade holder with	2,5V XHL	3,5V XHL
BETA battery handle	B-015.10.118	–
BETA4 USB rechargeable handle with USB cord and plug-in power supply	–	B-015.27.388

Tongue-blade holder with blade ejector for use with HEINE disposable tongue-blades

- ▶ **XHL xenon halogen technology.** Concentrated illumination of oral cavity and pharynx
- ▶ **Light-guide for bulb.** Avoids dazzle
- ▶ **Blade ejector.** Finger-tip pressure releases the used blade. No need to touch used blades
- ▶ **Only for HEINE disposable plastic tongue-blades.** Strong and hygienic



Kit includes: tongue-blade holder with	2,5V XHL	3,5V XHL
BETA battery handle	B-016.10.118	–
BETA4 USB rechargeable handle with USB cord and plug-in power supply	–	B-016.27.388

HEINE mini 3000® tongue-blade holder with blade ejector for HEINE disposable tongue-blades



- ▶ **Finger-tip pressure releases the used blade.** No need to touch the blade after use
- ▶ **XHL xenon halogen technology.** Concentrated illumination of oral cavity and pharynx
- ▶ **Only for HEINE disposable tongue-blades.** Durable and hygienic

Kit includes: mini 3000 tongue-blade holder with	2,5V XHL
mini 3000 battery handle* (with batteries), 5 disposable blades	D-001.74.118

*Available in black or blue. Please specify the colour you prefer when ordering.
If not otherwise specified, we will supply black instruments.

Further articles | accessories for HEINE tongue-blade holder



Tongue-blade holder head for wooden tongue-blades	2,5V XHL	3,5V XHL
without handle and accessories	B-001.12.302	B-002.12.302



Tongue-blade holder head for disposable tongue-blades	2,5V XHL	3,5V XHL
without handle and accessories	B-001.12.305	B-002.12.305



mini 3000 tongue-blade holder head	2,5V XHL
without handle and accessories	D-001.74.100



XHL xenon halogen spare bulb	2,5V XHL	3,5V XHL
for tongue-blade holder	X-001.88.037	X-002.88.049
for mini 3000 tongue-blade holder	X-001.88.037	–



Replacement light-guide for tongue-blade holder	
light-guide for bulb	B-000.12.308



Disposable plastic tongue-blades	
pack of 100 disposable plastic tongue-blades	B-000.12.304

HEINE mini-c hand-held examination light| mini-e ear light



Robust, durable examination light in a compact pocket size.
Bright, concentrated light – with unique LED^{HQ}.

- ▶ **Safe examination of the eyes** due to tested photobiological safety
- ▶ **Comfortable and ergonomic**
- ▶ **Natural colours and virtually unlimited operating life of the LED^{HQ}**
- ▶ **Switches off automatically when placed in the pocket**
- ▶ **20,000 on/off cycles guaranteed**
- ▶ **Replaceable batteries** (size: AAA)



[01]

[02]

mini-c mini-e kits	LED
mini-c hand-held examination light incl. batteries [01]	D-008.73.109
mini-e ear light incl. batteries [02] for otoplasty. The ear light is used to ensure that hearing aids fit correctly.	D-008.73.103

HEINE mini 3000® clip lamp

Compact, long-life pocket diagnostic light



Sturdy, long-life pocket diagnostic light in a compact, modern design with chrome head. Bright, concentrated light thanks to unique XHL xenon halogen lens-bulb. Can only be used with the mini 3000 handle system. Handle available in black or blue.

- ▶ **Compact, oval, attractive light.** Lies ergonomically in the hand
- ▶ **2-piece handle and head.** Easy to maintain, flexible. Compatible with other mini 3000 instrument heads
- ▶ **Enhanced XHL xenon halogen lens-bulb with 100 % more light compared to conventional bulbs.** Bright, focused light
- ▶ **High-quality handle: Chrome-finish upper section / refined plastic.** Shockproof, sturdy, non-slip
- ▶ **Attachment clip with integrated on|off switch.** Secure. Switches off automatically when replaced in the pocket. 20,000 switch cycles guaranteed
- ▶ **Replaceable batteries.** (Size AA) or optional rechargeable battery with mini NT table charger*
- ▶ **Ear light for otoplasty [02].** The ear light is used to ensure that hearing aids fit correctly. See order information accessories on [page 27](#)



[01]

[02]

mini 3000 clip lamp with	2,5V XHL
mini 3000 battery handle (with batteries) [01]	D-001.73.131

- ▶ Available in black or blue. Please specify the colour you prefer when ordering. If not otherwise specified, we will supply black instruments.
- ▶ *To upgrade to a rechargeable instrument with mini NT table charger, please see [page 161](#).



HEINE mini 3000® combi lamp

Compact, all purpose illuminator with integrated tongue-blade holder

Sturdy, long-life pocket diagnostic light in a compact, modern design. Bright, concentrated light thanks to unique XHL xenon halogen lens-bulb.

Can only be used with the mini 3000 handle system. Available in black or blue.

- ▶ **Many applications.** Can be used as a general illuminator and as an illuminated tongue-blade holder for wooden blades and HEINE disposable blades
- ▶ **2-piece handle and head.** Easy to maintain, flexible. Compatible with other mini 3000 instrument heads
- ▶ **Enhanced XHL xenon halogen lens-bulb with 100 % more light compared with conventional bulbs.** Bright, focused light
- ▶ **High-quality handle: Chrome-finish upper section|refined plastic**
Shockproof, sturdy, non-slip
- ▶ **Attachment clip with integrated on|off switch.** Secure. Switches off automatically when replaced in the pocket. 20,000 switch cycles guaranteed
- ▶ **Replaceable batteries.** (Size AA), or optional rechargeable battery with mini NT table charger*

mini 3000 combi lamp with	2,5V XHL
mini 3000 battery handle (with batteries) and 5 disposable blades	D-001.76.120



- ▶ Available in black or blue. Please specify the colour you prefer when ordering. If not otherwise specified, we will supply black instruments.
- ▶ *To upgrade to a rechargeable instrument with mini NT table charger, please see [page 161](#).

Further articles | accessories for HEINE pocket diagnostic lights



mini 3000 clip lamp head	2,5V XHL
without handle and accessories	D-001.73.130



mini 3000 combi lamp head	2,5V XHL
without handle and accessories	D-001.76.101

Available in black or blue. Please specify the colour you prefer when ordering. If not otherwise specified, we will supply black instruments.



XHL xenon halogen spare bulb	2,5V XHL
for mini 3000 clip lamp and combi lamp	X-001.88.107



Ear light for mini 3000 clip lamp	
ear light, 6 pieces in blister pack	D-000.73.105



Disposable tongue-blades for mini 3000 combi lamp	
pack of 100 disposable tongue-blades	B-000.12.304

► For information on HEINE mini 3000 battery and rechargeable handles,
see [pages 160-161](#).

HEINE veterinary ENT diagnostic instruments

Overview

It goes without saying that all of our special veterinary instruments are premium products. But, still, they differ in one or two details. Read on for a summary of what these different details are and all their benefits:



	G100 slit illumination head	BETA 200 VET F.O. otoscope
Housing construction	metal	
Magnification	1,6x	2,5x
Illumination	F.O. XHL or LED ^{HQ}	F.O. XHL or LED ^{HQ}
Instrument size	professional	
Handle options power sources	battery handle (XHL only), USB rechargeable handle, rechargeable handle with table charger, EN 200 EN 200-1	
Tips specula	long, closed specula, slit metal specula, open, short, closed specula, UniSpec VET disposable tips with adaptor	VET reusable specula
Pneumatic testing of tympanum mobility	–	insufflation port available
Catalogue page	29	31

HEINE G100 LED slit illumination head with LED illumination in HEINE Quality



Unimpaired working during the examination. Can be combined with different specula as attachments. Head with solid metal design and scratch-proof swivel lens, guaranteeing a long instrument life and high-quality patient assessments. Particularly bright illumination due to LED^{HQ} (no need to ever exchange the LED).

QUICK OVERVIEW

- ▶ Ideal for instrumentation with magnification and illumination due to slit head design
- ▶ 1.6x magnification
- ▶ Natural colour rendering
- ▶ Homogeneous exposure due to fiber-optic technology
- ▶ Particularly bright due to LED^{HQ}

EXTREME DURABILITY

- ▶ Solid metal housing
- ▶ Scratch-proof swivel lens
- ▶ Consistently good view over many years. No need to ever exchange the LED thanks to LED^{HQ}
- ▶ Specula fit securely due to double locking mechanism

INTUITIVE OPERABILITY

- ▶ Practical one-finger operation
- ▶ Always the ideal light intensity due to patented and continuous brightness control
- ▶ Safe, hygienic reprocessing

FLEXIBLE POWER SOURCE OPTIONS

- ▶ Rechargeable handle: with USB or table charger
- ▶ Full functionality of the G100 LED slit illumination head is guaranteed with the current BETA rechargeable handles and the EN 200 | EN 200-1 wall transformers
- ▶ Practical and expandable with other HEINE instrument heads
- ▶ **Also available with XHL xenon halogen illumination**
Bright illumination and authentic colour rendering; for other technical specifications see G100 LED F.O. slit illumination head

HEINE G100 slit illumination head

Diagnostic sets | kits

Set includes: G100 slit illumination head,

1 set long, closed specula (57 mm x 4 mm Ø, 65 mm x 6 mm Ø, 90 mm x 7 mm Ø),

1 spare bulb for XHL version, hard case



[01]

	2,5V XHL	3,5V XHL	LED
BETA battery handle [01]	G-112.10.118	–	–
BETA4 USB rechargeable handle with USB cord and plug-in power supply	–	G-112.27.388	G-112.28.388
BETA4 NT rechargeable handle with NT4 table charger	–	G-112.23.420	G-112.24.420



[02]

Kit includes: G100 slit illumination head with	LED
BETA4 USB rechargeable handle with USB cord and plug-in power supply [02]	G-010.28.388
BETA4 NT rechargeable handle with NT4 table charger	G-010.24.420

- For information on our combined diagnostic sets and kits see [pages 74-78](#).
- For information on HEINE battery and rechargeable handles and the EN 200 wall transformer, see [pages 150-160](#).

HEINE BETA® 200 LED VET F.O. otoscope

Our best otoscope for veterinary medicine with LED^{HQ}



The ideal instrument for examining disorders of the ear canal in animals. Exceptional durability combined with optimum magnification. Particularly bright illumination due to LED^{HQ}. HEINE BETA VET otoscopes are the result of ongoing optimisation and further development down to the smallest detail – where we leave nothing to chance.

QUICK OVERVIEW

- ▶ Very good spatial representation due to glass lenses developed specifically for veterinary medicine
- ▶ 2.5x magnification
- ▶ Natural colour rendering
- ▶ Even and reflex-free illumination due to fiber-optic technology
- ▶ Particularly bright due to LED^{HQ}

EXTREME DURABILITY

- ▶ Solid metal housing
- ▶ Scratch-proof, large viewing window
- ▶ Consistently good view over many years. No need to ever exchange the LED thanks to LED^{HQ}

INTUITIVE OPERABILITY

- ▶ Practical one-finger operation
- ▶ Always the ideal light intensity due to patented and continuous brightness control
- ▶ Easy instrumentation due to fixed, swivelling viewing window
- ▶ Safe, hygienic reprocessing
- ▶ Pneumatic eardrum testing by means of an integrated insufflation port

FLEXIBLE POWER SOURCE OPTIONS

- ▶ Rechargeable handle: with USB or table charger
- ▶ Full functionality of the BETA 200 LED VET is guaranteed with the current BETA rechargeable handles and the EN 200 | EN 200-1 wall transformers
- ▶ Practical and expandable with other HEINE instrument heads
- ▶ **Also available with XHL xenon halogen illumination.**
Bright illumination and authentic colour rendering; for other technical specifications see BETA 200 LED VET F.O. otoscope

HEINE BETA® 200 VET

Diagnostic kits



Kit includes: HEINE BETA 200 VET F.O. otoscope with

	2,5V XHL	LED
BETA battery handle	G-011.10.118	–
BETA4 USB rechargeable handle with USB cord and plug-in power supply [01]	–	G-011.28.388
BETA4 NT rechargeable handle with NT4 table charger	–	G-011.24.420

Long, closed metal specula

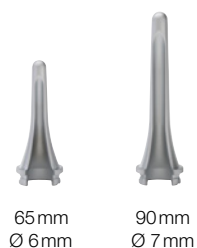


- **Metal construction, chrome-plated.** Easy to clean, disinfect and sterilize
- **Double bayonet lock for specula.** Firm mounting of specula to head

Closed specula for G100|G100 LED slit illumination head

57 mm long, Ø 4 mm [01]	G-000.21.330
65 mm long, Ø 6 mm	G-000.21.331
90 mm long, Ø 7 mm	G-000.21.332
170 mm long, Ø 10 mm [02]	G-000.21.350

Slit, open metal specula



- **High-quality chrome-plated metal construction.** Easy to clean, disinfect and sterilize
- **Matte internal surfaces.** Reduced reflexes
- **60° opening with rounded edges.** Ideal for instrumentation, atraumatic insertion
- **Double bayonet fitting.** Positive fit

Slit metal specula for G100|G100 LED slit illumination head

65 mm long, Ø 6 mm	G-000.21.341
90 mm long, Ø 7 mm	G-000.21.342

Short, closed specula

- ▶ **Made of high-density SANALON S with a smooth external surface**
Dust and germs are easily removed. Common germicides can be used
Autoclavable at up to 134 °C
- ▶ **Ergonomic shape.** Painless atraumatic insertion
- ▶ **Matte internal surfaces.** Reduced reflexes
- ▶ **Integral metal ring with 2 bayonet locks.** Firm mounting of specula to head

Short, closed SANALON S specula for G100|G100 LED slit illumination head and BETA 100 VET* otoscope



1 set = 5 veterinary specula in SANALON S	G-000.21.316
40mm long, Ø 2.2mm [01]	G-000.21.310
40mm long, Ø 2.8mm	G-000.21.311
40mm long, Ø 3.5mm	G-000.21.312
40mm long, Ø 4.5mm	G-000.21.313
40mm long, Ø 5.5mm [02]	G-000.21.314

*Instrument no longer available.

HEINE reusable VET specula

A VET adaptor [03] is required for use on the BETA 100 VET*.

- **Made of high-density SANALON S with a smooth external surface**
Dust and germs are easily removed. Common germicides can be used
Autoclavable at up to 134 °C
- **Ergonomic shape.** Painless atraumatic insertion
- **Convenient fixation system.** Positive fit to otoscope head
- **Double bayonet fitting.** Positive fit



Reusable SANALON S specula for BETA 200 VET|BETA 100 VET*

1 set = 3 reusable SANALON S specula	G-000.21.213
61 mm long, Ø 4 mm [01]	G-000.21.210
61 mm long, Ø 6 mm	G-000.21.211
61 mm long, Ø 9 mm [02]	G-000.21.212
Adaptor for reusable SANALON S VET specula [03]	G-000.21.214

HEINE UniSpec disposable specula



The adaptor illustrated [04] is necessary when using UniSpec specula with the G100|G100 LED slit illumination head.

- **No cleaning necessary.** Saves time
- **Hygienic and safe.** Eliminates cross-infection
- **Packed in units of 1,000.** Assures a competitive price
- **Original HEINE design and manufacture.** Guaranteed good fit to the instrument head

UniSpec disposable specula for BETA 100 VET*, operating otoscope* and G100|G100 LED slit illumination head

Pack of 1,000 UniSpec disposable specula Ø 2.5mm	B-000.11.242
Pack of 1,000 UniSpec disposable specula Ø 4 mm	B-000.11.241
Adaptor for use with slit illumination head [04]	G-000.21.302
UniSpec tip dispenser [05]	B-000.11.146

*Instrument no longer available.

⊗: Single use only.

Further articles | accessories for veterinary ENT diagnostic instruments



[01] Ø 2,2mm



[02] Ø 10mm



Ø 2,5mm



Ø 4mm



[03]



[04]



[05]



[06]

Reusable specula for operating otoscope*

1 set = 5 ear specula and 1 nose speculum	B-000.11.221
3 ear speculum Ø 3.5 4.5 5.5mm	B-000.11.222
ear speculum Ø 2.2mm [01]	B-000.11.215
ear speculum Ø 2.8mm	B-000.11.216
ear speculum Ø 3.5mm	B-000.11.217
ear speculum Ø 4.5mm	B-000.11.218
ear speculum Ø 5.5mm	B-000.11.219
nose speculum Ø 10mm [02]	B-000.11.220

AllSpec disposable tips made of recycled plastic for BETA 100 VET* and operating otoscope*

pack of 1,000 pcs. Ø 2.5mm [03]	B-000.11.128
pack of 1,000 pcs. Ø 4mm	B-000.11.127
case of 10 packs of 1,000 pcs, Ø 2.5mm (infants)	B-000.11.138
case of 10 packs of 1,000 pcs, Ø 4mm (adults)	B-000.11.137
dispenser pack, single, of 250 tips, Ø 2.5mm [04]	B-000.11.153
dispenser pack, single, of 250 tips, Ø 4mm	B-000.11.152
case of 10 dispenser packs of 250 tips, Ø 2.5mm	B-000.11.151
case of 10 dispenser packs of 250 tips, Ø 4mm	B-000.11.150
adaptor for AllSpec tips [05]	B-000.11.306
AllSpec tip-dispenser (2x 50 tips) [06]	B-000.11.149

*Instrument no longer available.

⊗: Single use only.

Further articles | accessories for veterinary ENT diagnostic instruments



G100 slit illumination head	2,5V XHL	3,5V XHL	LED
with swivel lens, without handle	G-001.21.301	G-002.21.301	G-008.21.301



BETA 200 VET F.O. otoscope head	2,5V XHL	3,5V XHL	LED
without handle, without accessories	G-001.21.250	G-002.21.250	G-008.21.250



XHL xenon halogen spare bulb	2,5V XHL	3,5V XHL
for G100 and BETA 200 VET	X-001.88.077	X-002.88.078
for operating otoscope* and BETA 100 VET*	X-001.88.037	X-002.88.049



Swivel lens for G100 slit illumination head	
swivel lens, single	G-000.21.209



Insufflation bulb for pneumatic testing	
insufflation bulb for BETA 200 VET and BETA 100 VET* otoscopes	B-000.11.240

*Instrument no longer available.