

∴ **HEINE DELTA® 20 T Dermatoscope**

Precision optics combined with the ability to toggle between polarised and non-polarised illumination



LED HQ

LED NOW IN HEINE QUALITY.



Highest Quality Images and Diagnostic Flexibility

The **DELTA20 T Dermatoscope** offers unrivalled precision optics and the functionality to toggle between polarised and non-polarised illumination. No time consuming exchange of contact plates is necessary, at the same time contact dermatoscopy with immersion liquids is possible at any point, allowing the examination method to be matched with the respective pigmented skin lesion to obtain the best diagnosis.



'Quality' has become one of most overused and misused terms today in an effort to sell products. Few companies, however, are able to tangibly define their products quality in terms of end-user benefits and value. At HEINE we clearly define the benefits of HEINE Quality in terms of Performance, Function and Durability:



PERFORMANCE

Precision HEINE Optics. High quality, achromatic optical system provides unmatched sharpness and resolution. Focusing system provides for 10x to 16x magnification for recognition of even the smallest details and structures.

LED in HQ. The new standard in LED illumination defining optimal light intensity, homogeneity and colour rendering for the most accurate diagnosis. Red is red, blue is blue. Colour temperature: 5,000K, Colour Rendering Index (CRI) >80 on a maximum scale of 100.



LED NOW IN HEINE QUALITY.



FUNCTION

Toggle between polarised and non-polarised illumination modes. Conveniently alternate between polarised and non-polarised views with the press of a button – no exchange of contact plates necessary. Allows recognition of the "Blink Sign" when observing crystalline structures and presence of milia cysts, increasing diagnostic function.

Optional small contact plate available. Special small contact plate for difficult to access lesions.

Digital documentation capabilities. Connect to major brand SLR digital cameras with HEINE digital camera lens system. Specially designed lenses integrate the camera and DELTA20 T optics together to provide the highest quality imaging possible.

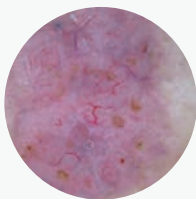


DURABILITY

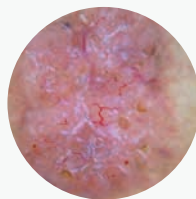
5 Year Guarantee. HEINE makes no compromises in manufacturing high quality medical instruments. Our commitment to vertical integration in manufacturing means we control all aspects of our instrument quality.

LED Thermal Management. LED illumination systems require thermal management to ensure long-term performance and product stability. Carefully selected and applied heat-diffusing materials in the DELTA20 T guarantee consistent quality and performance throughout the LED's lifetime rating of up to 50,000 hours.

"Blink Sign" observable in a basal cell carcinoma



Basal cell carcinoma
non-polarised illumination



Basal cell carcinoma
polarised illumination



ORDERING INFORMATION

DELTA20 T Set with BETA 4 NT rechargeable handle


The set includes the DELTA20 T dermatoscope head, contact plate with scale, **BETA 4 NT rechargeable handle with NT 4 table charger**, dermatoscopy oil 10ml, hard case

K-262.24.420




DELTA 20 T Set with BETA 4 USB rechargeable handle

The set includes the DELTA20 T dermatoscope head, contact plate with scale, **BETA 4 USB rechargeable handle with USB cord and plug-in power supply**, handle rest, dermatoscopy oil 10ml, hard case

K-262.28.388 



The set includes the DELTA20 T dermatoscope head, contact plate with scale, **BETA 4 USB rechargeable handle**, dermatoscopy oil 10ml, hard case

K-262.28.387 

DELTA20 T Set with BETA battery handle

The set includes the DELTA20 T dermatoscope head, contact plate with scale, **BETA battery handle**, dermatoscopy oil 10ml, hard case

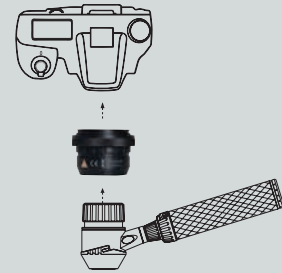
K-262.10.118



SLR Photo adaptor

for Dermatoscope/digital SLR camera, with optics.
Wide field of view, crisp image.

- for Canon K-000.34.185
- for Nikon K-000.34.186
- for Olympus K-000.34.187



For further information and configuration options please refer to:
www.heine.com

We reserve the right to change specification without notice.
© 2016 HEINE Optotechnik GmbH & Co. KG. All rights reserved.

Your distributor 05/16. A-000.00.212 e

